

# VIROLOGIA 2006/2007

Resultados  
Aulas Práticas

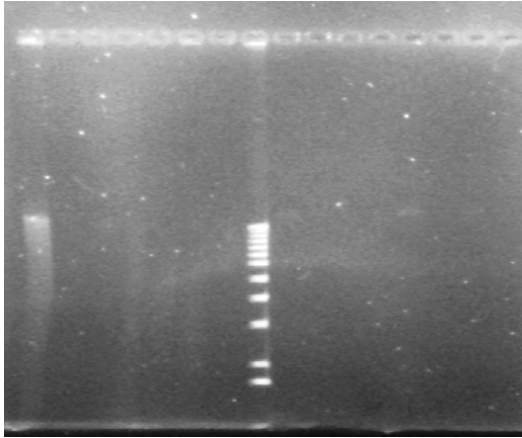
# **RESULTADOS ÁCIDOS NUCLEICOS**

**Ácidos nucleicos:**

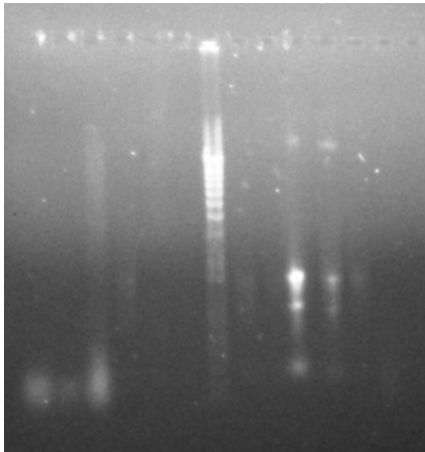
Virião (DNAs, RNAs)

Ladder

RNAs citoplasmáticos



**P1**



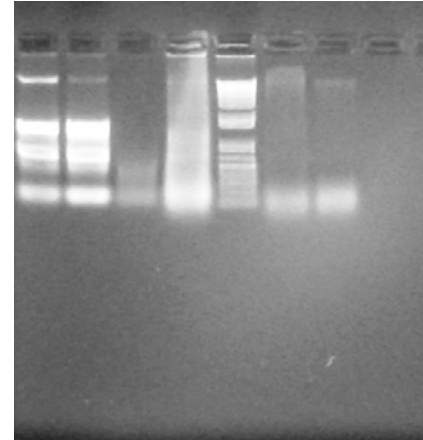
**P2**

**P3:**

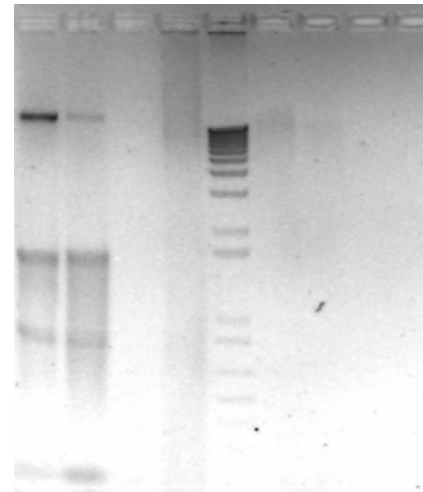
RNAs (citoplasmáticos, Virião)

Ladder

DNAs



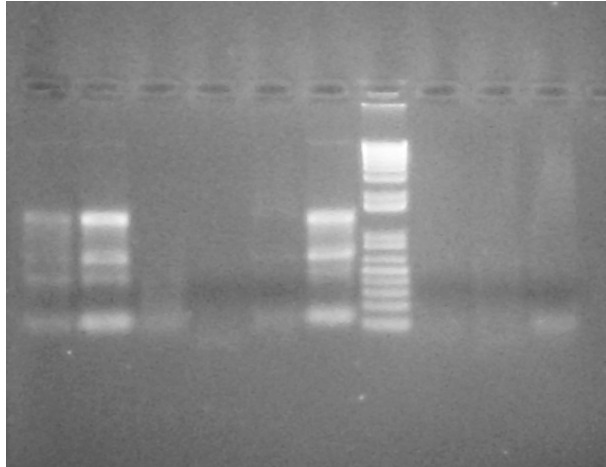
**A**



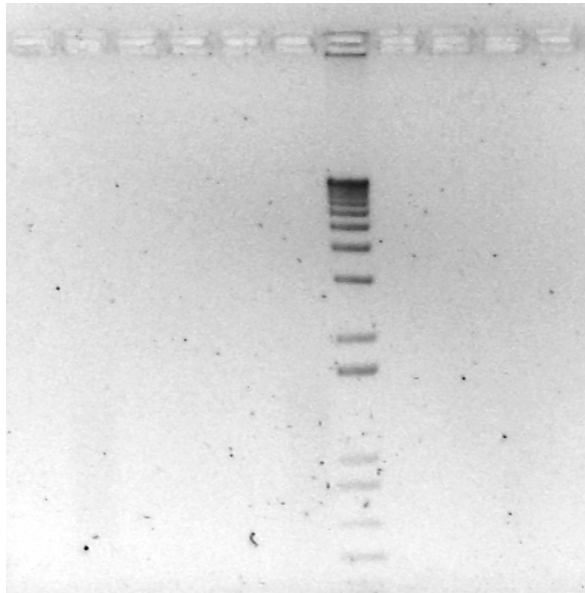
**B**

**P1- RNAs ((FC):**

citoplasmáticos, Ladder, Viriões



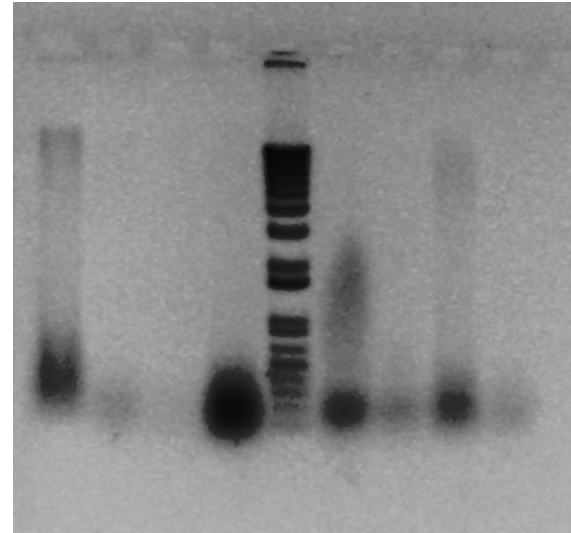
**A**



**B**

**P1+P2 – DNAs (FC):**

P1, Ladder, P2

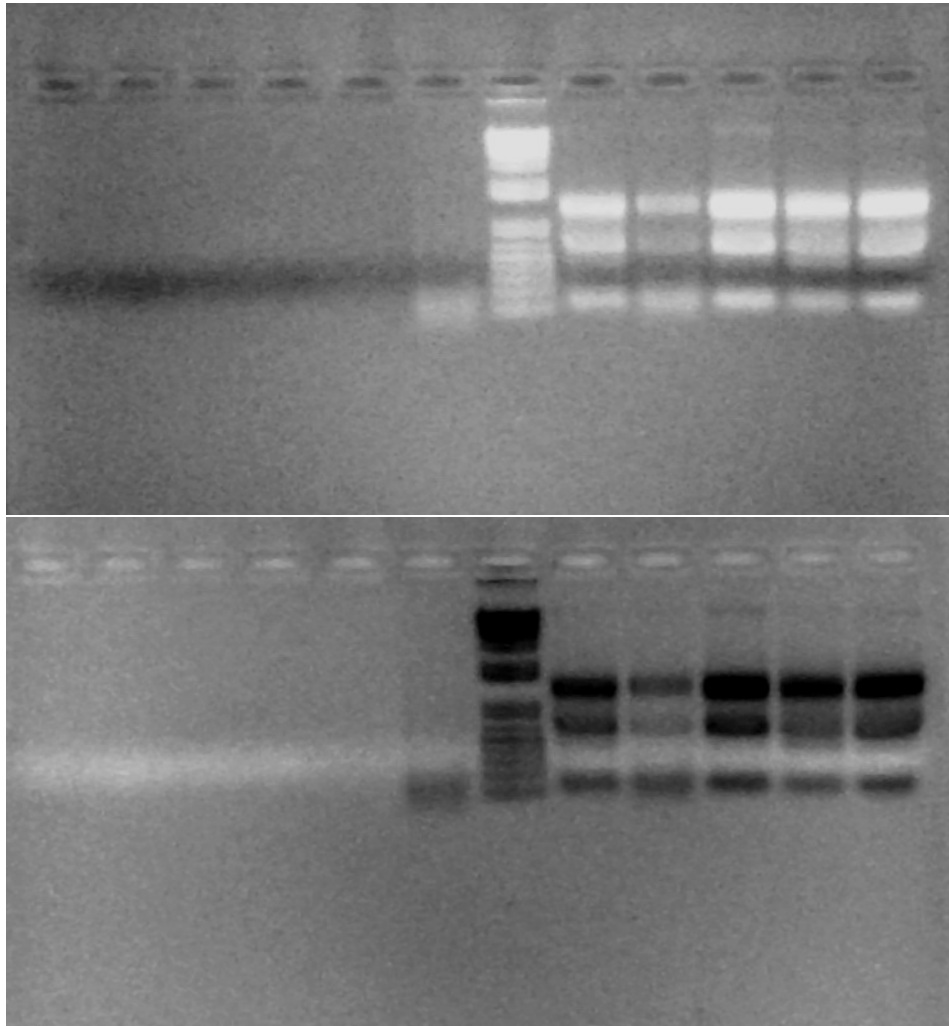


**RNAs:**

Virião (P1+P2+P3)

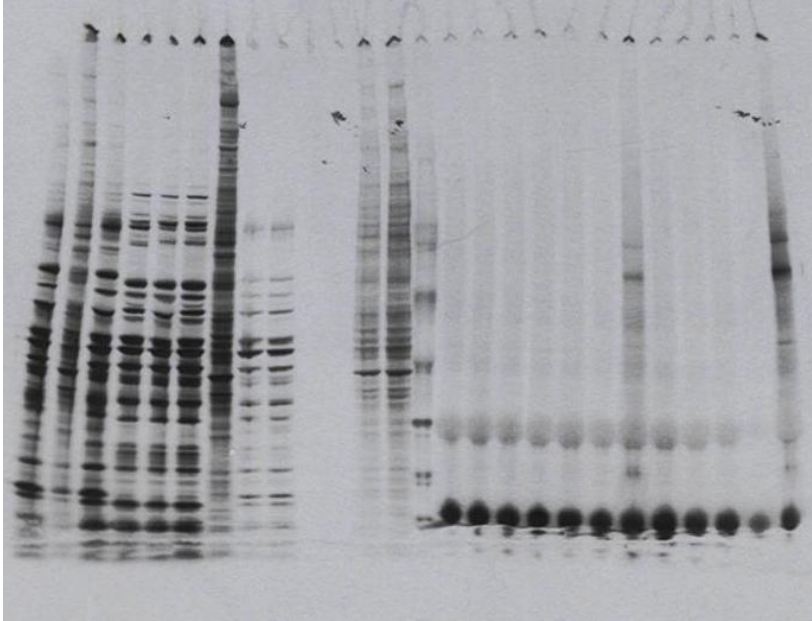
Ladder

citoplasmáticos P2 (excepto *Ma*)

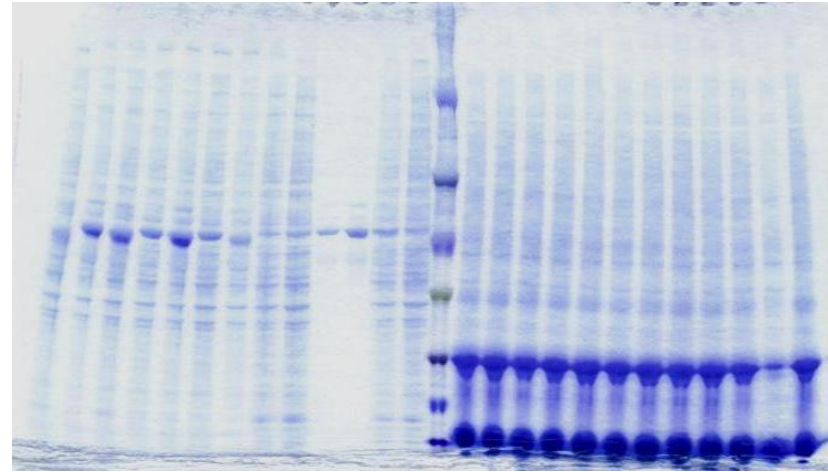


# **Resultados Proteínas**

## AMOSTRAS P1+P3



Autorradiografia



Gel corado com Azul de Coomassie

**Ordem das amostras no gel:**

**Proteínas celulares:**

**Amostras P3:** FV3A; FV3B; LMO; Ma 3B-6; MaP3-6; BoA; Test.(não infectadas).

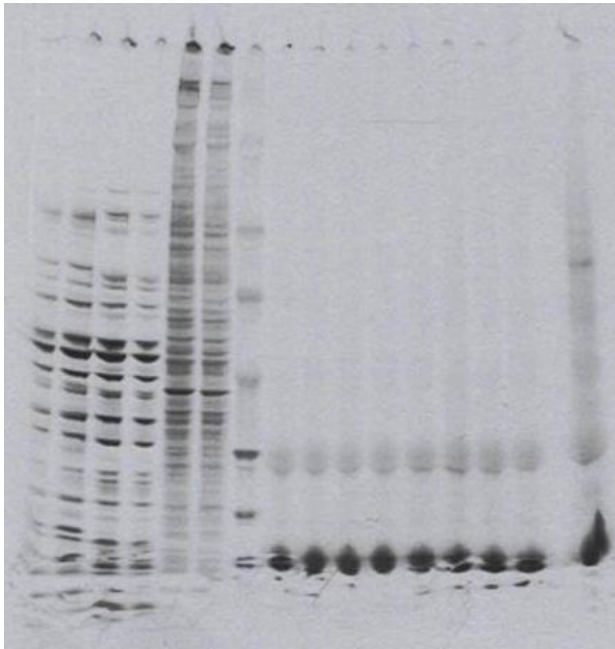
**Amostras P1:** FV3A; LMO; Ma 3B-6; BoA; Test; EMCV.

**Marcador de massa molecular:** **KDa:** 220; 97; 66; 45; 30; 20.1; 14.3

**Amostras da tradução *in vitro*:**

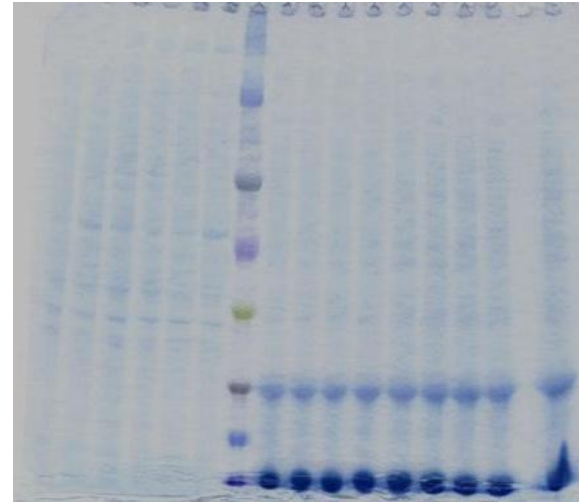
**Amostras P1:** EMCV; FV3A; Test. (RNAs cel. não infectadas); Virião G1; Virião G2; Virião G3; RNA B; Test negativo

**Amostras P3:** EMCV; Test.(RNAs cel. não infectadas); V.EMCV; RNA B (Test. Positivo)



Autorradiografia

## AMOSTRAS P2



Gel corado com Azul Coomassie

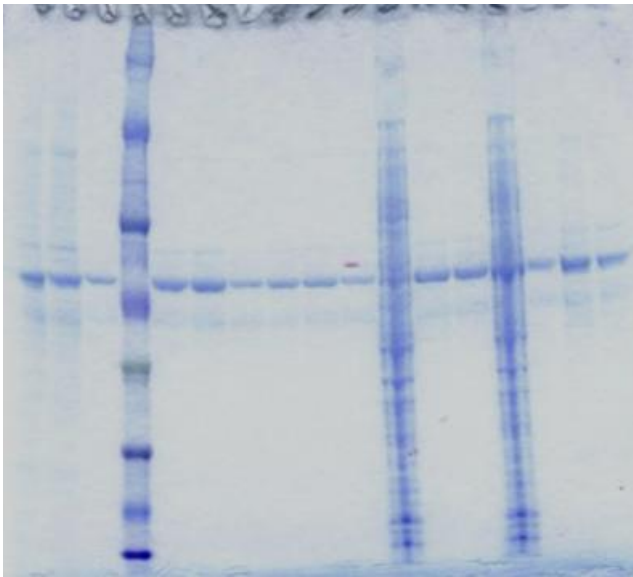
### Ordem das amostras no gel:

**Proteínas celulares:** FV3; LMO; MaP3-6; BoA; Test. (cel. não infectadas); EMCV

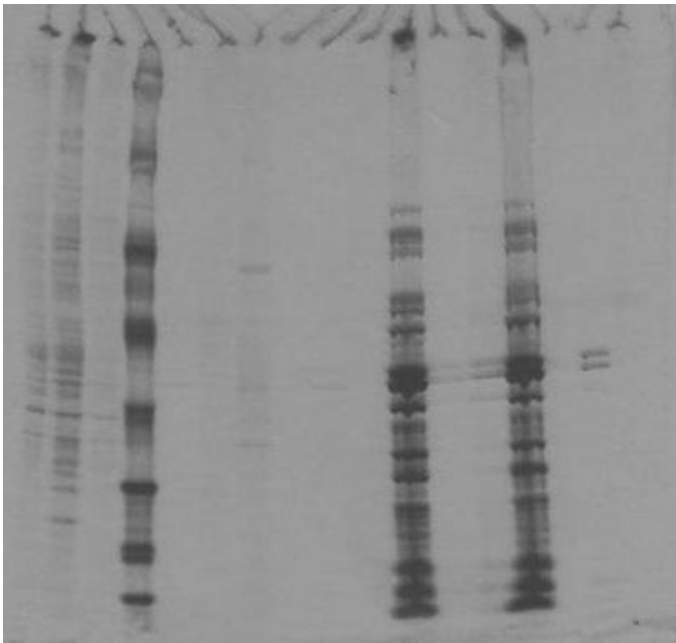
**Marcador de massa molecular:** **KDa: 220; 97; 66; 45; 30; 20.1; 14.3**

**Amostras da tradução *in vitro*:** EMCV; FV3; Test. (RNAs cel. não infectadas); LMO; MaP3-6; Virião EMCV G1; Virião EMCV G3; - ; RNA B (Test. Positivo)





**Azul de Coomassie**



**Autorradiografia**

## **Amostras P1+P2+P3: Polipéptidos de partículas virais**

Ordem das amostras:

EMCV (P1, P2)

Test (P2)

Marcador de Massa molecular

FV3 (P1, P2, P3)

LMO (P1, P2, P3)

BoA (P1, P2, P3)

Ma3B-6 (P1, P3)

MaP3-6 (P2, P3)